

 **NEW HOLLAND**

E305

NEW HOLLAND KOBELCO



NET FLYWHEEL POWER 148 kW - 201 hp

OPERATING WEIGHT (MAX) 31 560 kg

BUCKET CAPACITY 0.60 - 1.65 m³

 **NEW HOLLAND**

PROVEN PERFORMANCE

E=305*

■ EVOLUTION
IN TECHNOLOGY

■ EVOLUTION
IN PRODUCTIVITY
AND CONSUMPTION

■ EVOLUTION
IN COMFORT
AND SAFETY

■ EVOLUTION
IN ACCESSIBILITY
AND SERVICE

■ EVOLUTION
IN EQUIPMENT
AND VERSATILITY



■ **STANDARD HD DIPPERSTICKS**
With reinforcements antiwear on dipperstick to withstand the excellent lifting capacities and the powerful breakout force.



■ **S.H.S. (Smart Hydraulic System)**
for simultaneous movements and superior controllability.
Double pumps flow standard.



■ **“HIGH SPACE” CAB**

Outstanding ergonomics, perfect all-round visibility and reduced noise level are just a few of the pluses of this innovative cab.



■ **REINFORCED HD TRACKS**

for top reliability in the toughest applications and long-lasting.

SPECIFICATIONS



TIER 2 EMISSIONED ENGINE

Net flywheel power (ISO 14396)	148 kW/201 hp
Governed rpm	2100
Make and model	CNH F4AE0684K*D101
Type	diesel 4-stroke, direct injection, turbocharged and intercooler
Displacement	5.9 l
Number of cylinders	6
Bore x stroke	102 x 120 mm
Maximum torque at 1400 rpm	850 Nm

Remote engine oil filter for easy replacement

Electronic engine rpm control, dial type

Auto-Idling selector returns engine to minimum rpm when all controls are in neutral position

-15° outside temperature start as standard equipment (-25° optional)

The engine conforms to 97/68/CE STAGE 2 Standards



ELECTRICAL SYSTEM

Voltage	24 V
Alternator	70 A
Starter motor	4 kW
Standard maintenance-free batteries	2
Capacity	160 Ah



HYDRAULIC SYSTEM

S.H.S. (Smart Hydraulic System) for perfect controllability and complete simultaneity of all movements.

New generation **A.I. (Artificial Intelligence)** on-board computer

A.P.S. (Automatic Priority System) device

Computerized pumps delivery and main control valve actuation in relation to manipulators stroke and working pressure demand

E.S.S.C. (Engine Speed Sensing Control) device for total installed hydraulic power exploitation

High definition E.T.U. (Easy to Use) multi-function monitor incorporating:

- Maintenance programme
- Self Diagnosis System
- Operating Data Storage

Mechatronic Work Selector (M.W.S.):

- **Standard Mode (W)** - Standard operating mode
- **Heavy/Mechatronic Mode (H/M)** - Maximum hydraulic power for top productivity. In this mode, the unit **"learns"** the type of operation being completed after 2 cycles and automatically selects maximum efficiency/speed and operating precision with the **A.P.S. (Automatic Priority System)** device
- **Attachments Mode (A)** - Possibility of selecting and storing delivery required for special tools from the operator compartment

Continuous untimed insertion **Power Boost Device**. Continuous insertion of the device, when selected, ensures maximum digging performance and productivity in the toughest applications.

Standard double pumps flow device

Piping pressure discharge push button to facilitate tooling changeover without piping oil leakage.

Hammer/crusher two-directional system

Main pumps:

Two variable delivery pumps with electronic delivery adjustment. Pumps automatically revert to zero delivery with controls in neutral.

Maximum delivery.....2 x 241 l/min

Piloting circuit gear type pump

Maximum delivery21 l/min

Maximum operating pressure:

Equipment/travel	34.3 MPa
Swing	28.5 MPa
Power Boost	37.7 MPa
Hydraulic cylinders	double effect
- Lift (2) - bore x stroke	140 x 1235 mm
- Dipperstick (1) - bore x stroke	145 x 1670 mm
- Bucket (1) - bore x stroke	130 x 1208 mm
- Positioning (only triple articulation) bore x stroke	150 x 1230 mm

Independent hammer/positioning cylinder control



TRANSMISSION

Type	hydrostatic, two-speed
Travel motors	axial pistons type, double displacement
Brakes	oil bath disc type, automatically applied and hydraulically released
Final drive	oil bath, planetary reduction
Gradeability (continuous)	70% (35°)
Travel speeds:	
low	from 0 to 3.4 km/h
high	from 0 to 5.5 km/h

Automatic Down Shift device: to move travel motors to maximum displacement position with selector on "high speed" position when greater traction is required.



SWING

Swing motor	axial piston type
Swing brake	oil bath disc type, automatically applied and hydraulically released

Final drive	oil bath, planetary reduction
Swing ring	grease bath type
Swing speed	11.0 rpm



CAB AND CONTROLS

Transparent cab roof.

Standard automatic conditioning.

Controls.....piloted
Two cross path manipulators actuate all equipment movements and upperstructure swing.

Two pedals with hand levers control all track movements, counter-rotation included.

A safety lever completely neutralizes the piloting circuit



UNDERCARRIAGE

X-frame undercarriage design

Reinforced track chain with sealed bushings.

	E305EL	E305LC
Track rollers (each side)	9	9
Carrier rollers (each side)	2	2
Length of track on ground (mm)	4010	4010
Gauge (mm)	2390	2590
Shoes (mm)	600-700 800-900	600-700 800-900

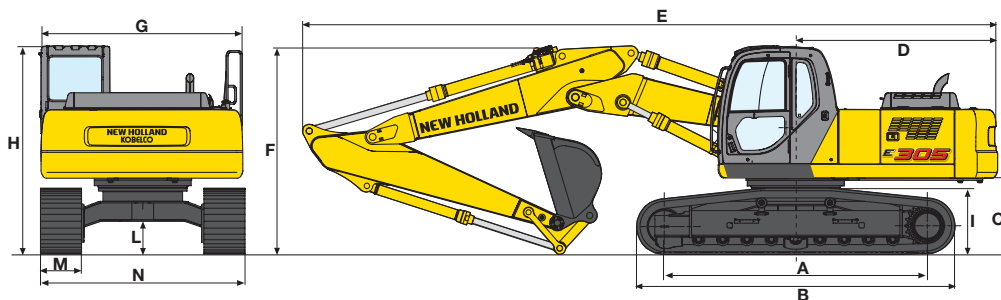


CAPACITIES

Engine	litres
Lube oil	17.0
Coolant	23.0
Fuel tank	447.0
Hydraulic system	280.0

TRIPLE ARTICULATION BOOM

DIMENSIONS (mm) - OPERATING WEIGHTS



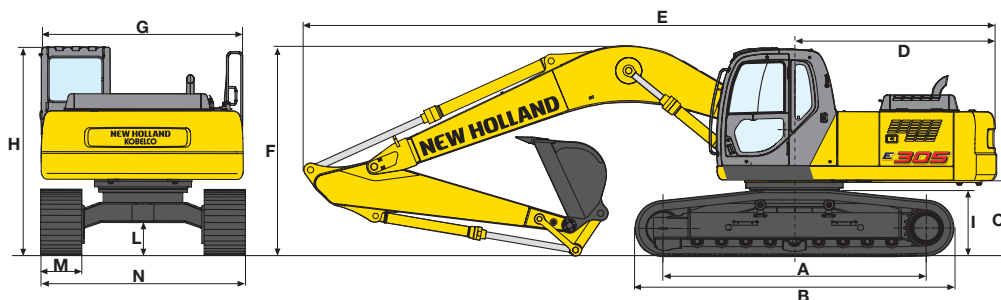
Versions	A	B	C	D	E(*)	F(*)	G	H	I	L
					(1) 10420	(1) 3270				
E305EL	4010	4870	1245	2950	(2) 10320	(2) 3220	2950	3170	1040	539
					(3) 10260	(3) 3060				
					(4) 10250	(4) 3290				
					(1) 10420	(1) 3270				
E305LC	4010	4870	1245	2950	(2) 10320	(2) 3220	2950	3170	1040	539
					(3) 10260	(3) 3060				
					(4) 10250	(4) 3290				

(*) Dipperstick: (1) 2 100 mm, (2) 2 400 mm, (3) 3 100 mm, (4) 3 750 mm

		E305EL				E305LC			
M - Larghezza suole	mm	600	700	800	900	600	700	800	900
N - Larghezza massima	mm	2990	3090	3190	3290	3190	3290	3390	3490
Peso operativo	kg	30300	30700	31100	31500	30360	30760	31160	31560
Press. specifica sul terreno	bar	0,62	0,54	0,48	0,43	0,62	0,54	0,48	0,43

MONOBLOC BOOM

DIMENSIONS (mm) - OPERATING WEIGHTS



Versions	A	B	C	D	E(*)	F(*)	G	H	I	L
					(1) 10470	(1) 3490				
E305EL	4010	4870	1245	2950	(2) 10370	(2) 3410	2950	3170	1040	539
					(3) 10270	(3) 3160				
					(4) 10280	(4) 3200				
					(1) 10470	(1) 3490				
E305LC	4010	4870	1245	2950	(2) 10370	(2) 3410	2950	3170	1040	539
					(3) 10270	(3) 3160				
					(4) 10280	(4) 3200				

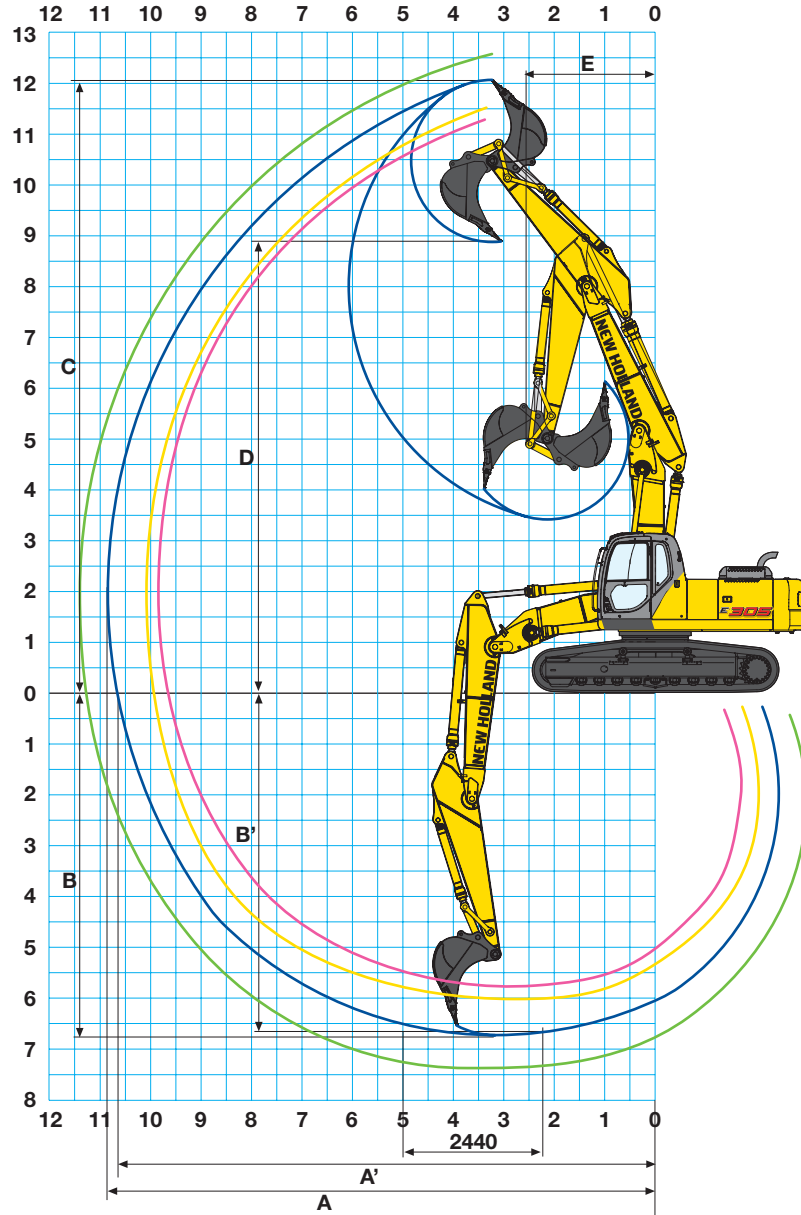
(*) Dipperstick: (1) 2 100 mm, (2) 2 400 mm, (3) 3 100 mm, (4) 3 750 mm

		E305EL				E305LC			
M - Shoe width	mm	600	700	800	900	600	700	800	900
N - maximum width	mm	2990	3090	3190	3290	3190	3290	3390	3490
Operating weight	kg	29400	29800	30200	30600	29460	29860	30260	30660
Specific ground pressure	bar	0.60	0.52	0.46	0.42	0.60	0.52	0.46	0.42

E305

TRIPLE ARTICULATION VERSION

DIGGING PERFORMANCE



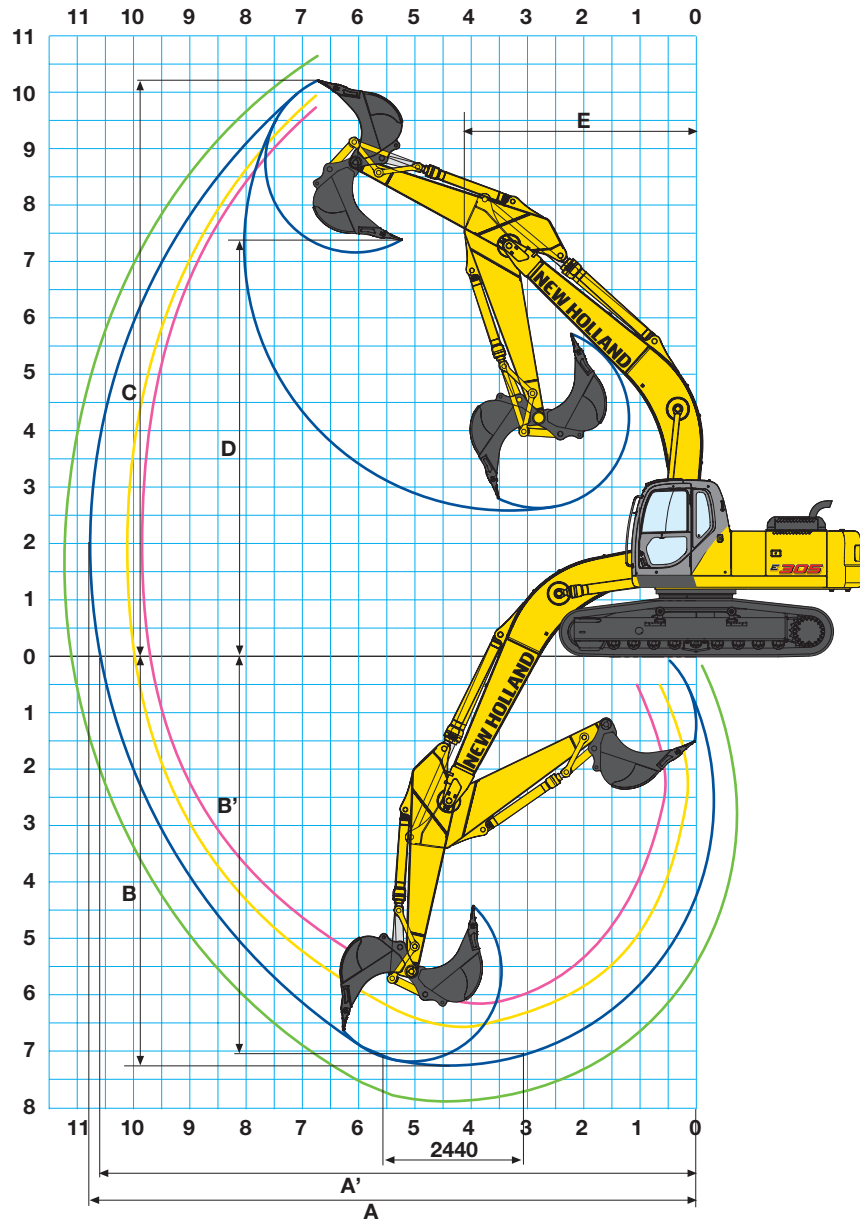
DIPPERSTICK	mm	2100	2400	3100	3750
A	mm	9857	10152	10800	11447
A'	mm	9655	9956	10616	11273
B	mm	5778	6079	6761	7416
B'	mm	5666	5972	6663	7326
C	mm	11301	11564	12088	12659
D	mm	8105	8366	8891	9462
E	mm	3084	2911	2562	2645

BREAKOUT FORCE					
Bucket	daN	17700	17700	17700	17700
Dipperstick	daN	18000	16100	12900	11000

WITH "POWER BOOST" ON:					
Benna	daN	19500	19500	19500	19500
Penetratore	daN	20000	17800	14400	12300

MONOBLOC VERSION

DIGGING PERFORMANCE

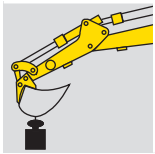


DIPPERSTICK	mm	2100	2400	3100	3750
A	mm	9830	10120	10750	11389
A'	mm	9628	9924	10565	11215
B	mm	6254	6554	7254	7904
B'	mm	6034	6357	7088	7763
C	mm	9747	9942	10232	10632
D	mm	6978	7128	7402	7770
E	mm	4226	4216	4116	4113

BREAKOUT FORCE					
Bucket	daN	17700	17700	17700	17700
Dipperstick	daN	18000	16100	12900	11000

WITH "POWER BOOST" ON:					
Bucket	daN	19500	19500	19500	19500
Dipperstick	daN	20000	17800	14400	12300

RADIUS OF LOAD



1.5 m		3.0 m		4.5 m		6.0 m		7.5 m		9.0 m		AT MAX REACH		Reach m
FRONT	SIDE	FRONT	SIDE	FRONT	SIDE	FRONT	SIDE	FRONT	SIDE	FRONT	SIDE	FRONT	SIDE	

MONOBLOC DIPPERSTICK 2100 mm

HEIGHT	1.5 m		3.0 m		4.5 m		6.0 m		7.5 m		9.0 m		AT MAX REACH		Reach m
+9.0 m															
+7.5 m							5.4 *	5.4 *					5.5 *	5.5 *	6.45
+6.0 m							5.6 *	5.6 *					5.6 *	5.2	7.16
+4.5 m					8.0 *	8.0 *	6.5 *	6.5 *	5.8 *	5.1 *			5.7 *	4.4	8.14
+3.0 m					10.4 *	10.3	7.6 *	6.8	6.4 *	4.9			6.0 *	4.0	8.47
+1.5 m					12.4 *	9.6	8.7 *	6.5	7.0 *	4.7			6.3 *	4.3	8.52
0 m					13.1 *	9.4	9.4 *	6.2	7.4 *	4.6			6.7 *	4.0	8.29
-1.5 m			13.4 *	13.4 *	13.0 *	9.4	9.6 *	6.2	7.5 *	4.5			7.2 *	4.3	7.78
-3.0 m			17.1 *	17.1 *	12.2 *	9.5	9.1 *	6.2					7.7 *	5.2	6.90
-4.5 m			14.2 *	14.2 *	10.3 *	9.9							8.4 *	7.4	5.50

TRIPLE ARTICULATION DIPPERSTICK 2100 mm

HEIGHT	1.5 m		3.0 m		4.5 m		6.0 m		7.5 m		9.0 m		AT MAX REACH		Reach m
+9.0 m					6.5 *	6.5 *							6.2 *	6.2 *	
+7.5 m					6.3 *	6.3 *	5.0 *	5.0 *					4.7 *	4.7 *	6.52
+6.0 m					6.7 *	6.7 *	5.1 *	5.1 *	4.1 *	4.1 *			4.1 *	4.1 *	7.56
+4.5 m					8.1 *	8.1 *	5.5 *	5.5 *	4.2 *	4.2 *			3.8 *	3.8 *	8.20
+3.0 m					11.1 *	10.2	6.3 *	6.3 *	4.5 *	4.5 *			3.7 *	3.7 *	8.53
+1.5 m					13.0 *	9.4	7.2 *	6.4	4.8 *	4.6			3.8 *	3.8	8.58
0 m					12.3 *	9.1	8.0 *	6.1	5.0 *	4.5			4.1 *	3.9	8.36
-1.5 m					10.8 *	9.2	8.4 *	6.1	5.2 *	4.5			4.7 *	4.2	7.84
-3.0 m					8.4 *	8.4 *	6.6 *	6.2					5.1 *	5.1	7.00
-4.5 m															

MONOBLOC DIPPERSTICK mm

HEIGHT	1.5 m		3.0 m		4.5 m		6.0 m		7.5 m		9.0 m		AT MAX REACH		Reach m
+9.0 m															
+7.5 m													5.1 *	5.1 *	6.86
+6.0 m							5.3 *	5.3 *	5.2 *	5.2 *			4.9 *	4.8	7.85
+4.5 m					7.4 *	7.4 *	6.2 *	6.2 *	5.6 *	5.1			5.0 *	4.2	8.47
+3.0 m					9.9 *	9.9 *	7.4 *	6.9	6.2 *	4.9			5.3 *	3.8	8.78
+1.5 m					12.0 *	9.7	8.5 *	6.5	6.8 *	4.7			5.8 *	3.7	8.83
0 m					13.0 *	9.4	9.3 *	6.2	7.3 *	4.6			6.4 *	3.7	8.62
-1.5 m			12.7 *	12.7 *	13.1 *	9.3	9.6 *	6.1	7.5 *	4.5			6.8 *	4.0	8.12
-3.0 m	14.4 *	14.4 *	17.8 *	17.8 *	12.5 *	9.5	9.3 *	6.2					7.3 *	4.8	7.28
-4.5 m			15.2 *	15.2 *	10.8 *	9.8							7.9 *	6.5	5.96

TRIPLE ARTICULATION DIPPERSTICK 2400 mm

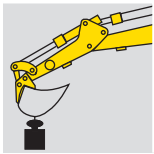
HEIGHT	1.5 m		3.0 m		4.5 m		6.0 m		7.5 m		9.0 m		AT MAX REACH		Reach m
+9.0 m					6.1 *	6.1 *							5.5 *	5.5 *	
+7.5 m					6.0 *	6.0 *	4.8 *	4.8 *					4.3 *	4.3 *	6.94
+6.0 m					6.4 *	6.4 *	4.9 *	4.9 *	4.0 *	4.0 *			3.8 *	3.8 *	7.92
+4.5 m			13.1 *	13.1 *	7.6 *	7.6 *	5.4 *	5.4 *	4.1 *	4.1 *			3.5 *	3.5 *	8.53
+3.0 m					10.3 *	10.3 *	6.1 *	6.1 *	4.3 *	4.3 *			3.5 *	3.5 *	8.84
+1.5 m					13.0 *	9.5	7.0 *	6.4	4.7 *	3.6			3.5 *	3.5 *	8.89
0 m					12.6 *	9.2	7.9 *	6.1	5.0 *	4.5			3.8 *	3.6	8.68
-1.5 m			12.1 *	12.1 *	11.3 *	9.2	8.4 *	6.1	5.1 *	4.4			4.3 *	3.9	8.19
-3.0 m					9.0 *	9.0 *	7.0 *	6.1					5.0 *	4.6	7.36
-4.5 m															

As per ISO 10567 with excavator equipped with bucket. The indicated load is no more than 87% of hydraulic system lifting capacity or 75% of static tipping load. Value marked with an asterisc are limited by the hydraulic system.

EVOLUTION - LIFTING CAPACITY

EL VERSION

VALUE ARE EXPRESSED IN TONNES.



RADIUS OF LOAD

1.5 m		3.0 m		4.5 m		6.0 m		7.5 m		9.0 m		AT MAX REACH		Reach m
FRONT	SIDE	FRONT	SIDE	FRONT	SIDE	FRONT	SIDE	FRONT	SIDE	FRONT	SIDE	FRONT	SIDE	

MONOBLOC DIPPERSTICK 3100 mm

HEIGHT															
+7.5 m									3.5 *	3.5 *			2.9 *	2.9 *	7.69
+6.0 m									4.5 *	4.5 *			2.8 *	2.8 *	8.59
+4.5 m							5.4 *	5.4 *	5.0 *	5.0 *	3.5 *	3.5 *	2.8 *	2.8 *	9.15
+3.0 m			14.4 *	14.4 *	8.6 *	8.6 *	6.6 *	6.6 *	5.6 *	5.0	5.1 *	3.7	2.9 *	2.9 *	9.45
+1.5 m			6.6 *	6.6 *	11.0 *	10.0	7.9 *	6.6	6.4 *	4.7	5.5 *	3.5	3.2 *	3.2 *	9.49
0 m			8.3 *	8.3 *	12.5 *	9.5	8.9 *	6.3	7.0 *	4.5	5.7 *	3.4	3.6 *	3.3	9.29
-1.5 m	8.1 *	8.1 *	11.7 *	11.7 *	13.0 *	9.3	9.4 *	6.1	7.3 *	4.4			4.4 *	3.5	8.84
-3.0 m	11.7 *	11.7 *	16.1 *	16.1 *	12.8 *	9.3	9.4 *	6.1	7.3 *	4.4			5.7 *	4.0	8.07
-4.5 m	15.9 *	15.9 *	17.0 *	17.0 *	11.7 *	9.5	8.6 *	6.2					7.2 *	5.1	6.90
-6.0 m					9.1 *	9.1 *							7.9 *	7.9 *	5.05

TRIPLE ARTICULATION DIPPERSTICK 3100 mm

HEIGHT															
+10.5 m													4.2 *	4.2 *	4.17
+9.0 m							4.5 *	4.5 *					3.2 *	3.2 *	6.43
+7.5 m							4.3 *	4.3 *	3.6 *	3.6 *			2.9 *	2.9 *	7.79
+6.0 m					5.7 *	5.7 *	4.5 *	4.5 *	3.6 *	3.6 *			2.8 *	2.8 *	8.67
+4.5 m			9.8 *	9.8 *	6.7 *	6.7 *	4.9 *	4.9 *	3.8 *	3.8 *	3.0 *	3.0 *	2.8 *	2.8 *	9.23
+3.0 m			17.7 *	17.7 *	8.7 *	8.7 *	5.6 *	5.6 *	4.0 *	4.0 *	3.1 *	3.1 *	2.9 *	2.9 *	9.52
+1.5 m			6.3 *	6.3 *	12.4 *	9.8	6.5 *	6.5 *	4.4 *	4.4 *	3.3 *	3.3 *	3.0 *	3.0 *	9.57
0 m			7.9 *	7.9 *	12.9 *	9.3	7.5 *	6.2	4.7 *	4.5	3.4 *	3.4 *	3.2 *	3.2 *	9.37
-1.5 m			11.2 *	11.2 *	12.1 *	9.2	8.2 *	6.0	5.0 *	4.4			3.5 *	3.4	8.92
-3.0 m			13.4 *	13.4 *	10.3 *	9.3	7.9 *	6.0	5.0 *	4.4			4.2 *	3.9	8.16

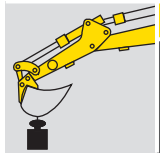
MONOBLOC DIPPERSTICK 3750 mm

HEIGHT															
+7.5 m													2.0 *	2.0 *	8.50
+6.0 m									3.9 *	3.9 *	3.0 *	3.0 *	2.0 *	2.0 *	9.32
+4.5 m									4.4 *	4.4 *	4.3 *	3.8	2.0 *	2.0 *	9.84
+3.0 m			11.2 *	11.2 *	7.3 *	7.3 *	5.8 *	5.8 *	5.1 *	5.0	4.7 *	3.7	2.1 *	2.1 *	10.12
+1.5 m			9.7 *	9.7 *	9.9 *	9.9 *	7.2 *	6.7	5.9 *	4.7	5.2 *	3.5	2.2 *	2.2 *	10.16
0 m	4.1 *	4.1 *	8.7 *	8.7 *	11.8 *	9.5	8.4 *	6.3	6.6 *	4.5	5.6 *	3.4	2.5 *	2.5 *	9.96
-1.5 m	6.9 *	6.9 *	10.8 *	10.8 *	12.7 *	9.2	9.1 *	6.0	7.1 *	4.4	5.8	3.3	2.9 *	2.9 *	9.55
-3.0 m	9.8 *	9.8 *	14.1 *	14.1 *	12.9 *	9.1	9.4 *	5.9	7.3 *	4.3			3.6 *	3.4	8.85
-4.5 m	13.2 *	13.2 *	18.2 *	18.2 *	12.2 *	9.3	9.0 *	6.0	6.8 *	4.4			5.1 *	4.2	7.80
-6.0 m			15.1 *	15.1 *	10.4 *	9.6	7.4 *	6.3					7.0 *	6.0	6.22

TRIPLE ARTICULATION DIPPERSTICK 3750 mm

HEIGHT															
+10.5 m													2.8 *	2.8 *	5.55
+9.0 m							4.1 *	4.1 *					2.3 *	2.3 *	7.40
+7.5 m							4.0 *	4.0 *	3.3 *	3.3 *			2.1 *	2.1 *	8.60
+6.0 m							4.1 *	4.1 *	3.3 *	3.3 *	2.8 *	2.8 *	2.0 *	2.0 *	9.41
+4.5 m					5.9 *	5.9 *	4.5 *	4.5 *	3.5 *	3.5 *	2.8 *	2.8 *	2.0 *	2.0 *	9.92
+3.0 m			13.8 *	13.8 *	7.5 *	7.5 *	5.1 *	5.1 *	3.8 *	3.8 *	2.9 *	2.9 *	2.0 *	2.0 *	10.19
+1.5 m			9.6 *	9.6 *	10.5 *	10.1	5.9 *	5.9 *	4.1 *	4.1 *	3.1 *	3.1 *	2.1 *	2.1 *	10.23
0 m	3.6 *	3.6 *	8.3 *	8.3 *	12.8 *	9.4	7.0 *	6.2	4.5 *	4.5	3.2 *	3.2 *	2.4 *	2.4 *	10.05
-1.5 m	6.4 *	6.4 *	10.3 *	10.3 *	12.5 *	9.1	7.9 *	6.0	4.8 *	4.3	3.3 *	3.3	2.7 *	2.7 *	9.63
-3.0 m			13.6 *	13.6 *	11.2 *	9.1	8.3 *	5.9	5.0 *	4.3			3.3 *	3.3 *	8.94
-4.5 m					8.8 *	8.8 *	6.6 *	6.0	4.6 *	4.4			3.9 *	3.9 *	7.89

As per ISO 10567 with excavator equipped with bucket. The indicated load is no more than 87% of hydraulic system lifting capacity or 75% of static tipping load. Value marked with an asterisk are limited by the hydraulic system.



RADIUS OF LOAD

1.5 m		3.0 m		4.5 m		6.0 m		7.5 m		9.0 m		AT MAX REACH		Reach m
FRONT	SIDE	FRONT	SIDE	FRONT	SIDE	FRONT	SIDE	FRONT	SIDE	FRONT	SIDE	FRONT	SIDE	

MONOBLOC DIPPERSTICK 2100 mm

HEIGHT	1.5 m		3.0 m		4.5 m		6.0 m		7.5 m		9.0 m		AT MAX REACH		Reach m
+9.0 m															
+7.5 m							5.4 *	5.4 *					5.5 *	5.5 *	6.45
+6.0 m							5.6 *	5.6 *					5.6 *	5.6 *	7.16
+4.5 m					8.0 *	8.0 *	6.5 *	6.5 *	5.8 *	5.5			5.7 *	4.8	8.14
+3.0 m					10.4 *	10.4 *	7.6 *	7.5	6.4 *	5.3			6.0 *	4.4	8.47
+1.5 m					12.4 *	10.7	8.7 *	7.1	7.0 *	5.2			6.3 *	4.3	8.52
0 m					13.1 *	10.4	9.4 *	6.9	7.4 *	5.0			6.7 *	4.4	8.29
-1.5 m			13.4 *	13.4 *	13.0 *	10.4	9.6 *	6.8	7.5 *	5.0			7.2 *	4.8	7.78
-3.0 m			17.1 *	17.1 *	12.2 *	10.6	9.1 *	6.9					7.7 *	5.7	6.90
-4.5 m			14.2 *	14.2 *	10.3 *	10.3 *							8.4 *	8.2	5.50

TRIPLE ARTICULATION DIPPERSTICK 2100 mm

HEIGHT	1.5 m		3.0 m		4.5 m		6.0 m		7.5 m		9.0 m		AT MAX REACH		Reach m
+9.0 m					6.5 *	6.5 *							6.2 *	6.2 *	
+7.5 m					6.3 *	6.3 *	5.0 *	5.0 *					4.7 *	4.7 *	6.52
+6.0 m					6.7 *	6.7 *	5.1 *	5.1 *	4.1 *	4.1 *			4.1 *	4.1 *	7.56
+4.5 m					8.1 *	8.1 *	5.5 *	5.5 *	4.2 *	4.2 *			3.8 *	3.8 *	8.20
+3.0 m					11.1 *	11.1 *	6.3 *	6.3 *	4.5 *	4.5 *			3.7 *	3.7 *	8.53
+1.5 m					13.0 *	10.5	7.2 *	7.0	4.8 *	4.8 *			3.8 *	3.8 *	8.58
0 m					12.3 *	10.2	8.0 *	6.8	5.0 *	5.0			4.1 *	4.1 *	8.36
-1.5 m					10.8 *	10.2	8.4 *	6.7	5.2 *	4.9			4.7 *	4.7	7.84
-3.0 m					8.4 *	8.4 *	6.6 *	6.6 *					5.1 *	5.1 *	7.00
-4.5 m															

MONOBLOC DIPPERSTICK 2400 mm

HEIGHT	1.5 m		3.0 m		4.5 m		6.0 m		7.5 m		9.0 m		AT MAX REACH		Reach m
+9.0 m															
+7.5 m													5.1 *	5.1 *	6.86
+6.0 m							5.3 *	5.3 *	5.2 *	5.2 *			4.9 *	4.9 *	7.85
+4.5 m					7.4 *	7.4 *	6.2 *	6.2 *	5.6 *	5.6 *			5.0 *	5.0 *	8.47
+3.0 m					9.9 *	9.9 *	7.4 *	7.4 *	6.2 *	6.2 *			5.3 *	5.3 *	8.78
+1.5 m					12.0 *	12.0 *	8.5 *	8.5 *	6.8 *	6.8 *			5.8 *	5.8 *	8.83
0 m					13.0 *	13.0 *	9.3 *	9.3 *	7.3 *	7.3 *			6.4 *	6.4 *	8.62
-1.5 m			12.7 *	12.7 *	13.1 *	13.1 *	9.6 *	9.6 *	7.5 *	7.5 *			6.8 *	6.8 *	8.12
-3.0 m	14.4 *	14.4 *	17.8 *	17.8 *	12.5 *	12.5 *	9.3 *	9.3 *					7.3 *	7.3 *	7.28
-4.5 m			15.2 *	15.2 *	10.8 *	10.8 *							7.9 *	7.9 *	5.96

TRIPLE ARTICULATION DIPPERSTICK 2400 mm

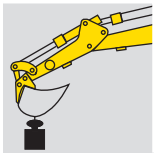
HEIGHT	1.5 m		3.0 m		4.5 m		6.0 m		7.5 m		9.0 m		AT MAX REACH		Reach m
+9.0 m					6.1 *	6.1 *							5.5 *	5.5 *	
+7.5 m					6.0 *	6.0 *	4.8 *	4.8 *					4.3 *	4.3 *	6.94
+6.0 m					6.4 *	6.4 *	4.9 *	4.9 *	4.0 *	4.0 *			3.8 *	3.8 *	7.92
+4.5 m			13.1 *	13.1 *	7.6 *	7.6 *	5.4 *	5.4 *	4.1 *	4.1 *			3.5 *	3.5 *	8.53
+3.0 m					10.3 *	10.3 *	6.1 *	6.1 *	4.3 *	4.3 *			3.5 *	3.5 *	8.84
+1.5 m					13.0 *	10.6	7.0 *	7.0 *	4.7 *	4.7 *			3.5 *	3.5 *	8.89
0 m					12.6 *	10.2	7.9 *	6.8	5.0 *	5.0			3.8 *	3.8 *	8.68
-1.5 m			12.1 *	12.1 *	11.3 *	10.2	8.4 *	6.7	5.1 *	4.9			4.3 *	4.3 *	8.19
-3.0 m					9.0 *	9.0 *	7.0 *	6.8					5.0 *	5.0 *	7.36
-4.5 m															

As per ISO 10567 with excavator equipped with bucket. The indicated load is no more than 87% of hydraulic system lifting capacity or 75% of static tipping load. Value marked with an asterisk are limited by the hydraulic system.

EVOLUTION - LIFTING CAPACITY

EL VERSION

VALUE ARE EXPRESSED IN TONNES.



RADIUS OF LOAD

1.5 m		3.0 m		4.5 m		6.0 m		7.5 m		9.0 m		AT MAX REACH		Reach m
FRONT	SIDE	FRONT	SIDE	FRONT	SIDE	FRONT	SIDE	FRONT	SIDE	FRONT	SIDE	FRONT	SIDE	

MONOBLOC DIPPERSTICK 3100 mm

HEIGHT															
+7.5 m									3,5 *	3,5 *			2,9 *	2,9 *	7,69
+6.0 m									4,5 *	4,5 *			2,8 *	2,8 *	8,59
+4.5 m							5,4 *	5,4 *	5,0 *	5,0 *	3,5 *	3,5 *	2,8 *	2,8 *	9,15
+3.0 m			14,4 *	14,4 *	8,6 *	8,6 *	6,6 *	6,6 *	5,6 *	5,4	5,1 *	4,0	2,9 *	2,9 *	9,45
+1.5 m			6,6 *	6,6 *	11,0 *	11,0 *	7,9 *	7,2	6,4 *	5,2	5,5 *	3,9	3,2 *	3,2 *	9,49
0 m			8,3 *	8,3 *	12,5 *	10,5	8,9 *	6,9	7,0 *	5,0	5,7 *	3,8	3,6 *	3,6	9,29
-1.5 m	8,1 *	8,1 *	11,7 *	11,7 *	13,0 *	10,3	9,4 *	6,7	7,3 *	4,9			4,4 *	3,9	8,84
-3.0 m	11,7 *	11,7 *	16,1 *	16,1 *	12,8 *	10,3	9,4 *	6,7	7,3 *	4,9			5,7 *	4,4	8,07
-4.5 m	15,9 *	15,9 *	17,0 *	17,0 *	11,7 *	10,6	8,6 *	6,8					7,2 *	5,6	6,90
-6.0 m					9,1 *	9,1 *							7,9 *	7,9 *	5,05

TRIPLE ARTICULATION DIPPERSTICK 3100 mm

HEIGHT															
+10.5 m													4,2 *	4,2 *	4,17
+9.0 m							4,5 *	4,5 *					3,2 *	3,2 *	6,43
+7.5 m							4,3 *	4,3 *	3,6 *	3,6 *			2,9 *	2,9 *	7,79
+6.0 m					5,7 *	5,7 *	4,5 *	4,5 *	3,6 *	3,6 *			2,8 *	2,8 *	8,67
+4.5 m			9,8 *	9,8 *	6,7 *	6,7 *	4,9 *	4,9 *	3,8 *	3,8 *	3,0 *	3,0 *	2,8 *	2,8 *	9,23
+3.0 m			17,7 *	17,7 *	8,7 *	8,7 *	5,6 *	5,6 *	4,0 *	4,0 *	3,1 *	3,1 *	2,9 *	2,9 *	9,52
+1.5 m			6,3 *	6,3 *	12,4 *	10,9	6,5 *	6,5 *	4,4 *	4,4 *	3,3 *	3,3 *	3,0 *	3,0 *	9,57
0 m			7,9 *	7,9 *	12,9 *	10,4	7,5 *	6,8	4,7 *	4,7 *	3,4 *	3,4 *	3,2 *	3,2 *	9,37
-1.5 m			11,2 *	11,2 *	12,1 *	10,2	8,2 *	6,7	5,0 *	4,8			3,5 *	3,5 *	8,92
-3.0 m			13,4 *	13,4 *	10,3 *	10,3 *	7,9 *	6,7	5,0 *	4,9			4,2 *	4,2 *	8,16

MONOBLOC DIPPERSTICK 3750 mm

HEIGHT															
+7.5 m													2,0 *	2,0 *	8,50
+6.0 m									3,9 *	3,9 *	3,0 *	3,0 *	2,0 *	2,0 *	9,32
+4.5 m									4,4 *	4,4 *	4,3 *	4,2	2,0 *	2,0 *	9,84
+3.0 m			11,2 *	11,2 *	7,3 *	7,3 *	5,8 *	5,8 *	5,1 *	5,1 *	4,7 *	4,0	2,1 *	2,1 *	10,12
+1.5 m			9,7 *	9,7 *	9,9 *	9,9 *	7,2 *	7,2 *	5,9 *	5,2	5,2	3,9	2,2 *	2,2 *	10,16
0 m	4,1 *	4,1 *	8,7 *	8,7 *	11,8 *	10,6	8,4 *	6,9	6,6 *	5,0	5,6 *	3,8	2,5 *	2,5 *	9,97
-1.5 m	6,9 *	6,9 *	10,8 *	10,8 *	12,7 *	10,3	9,1 *	6,7	7,1 *	4,8	5,8	3,7	2,9 *	2,9 *	9,55
-3.0 m	9,8 *	9,8 *	14,1 *	14,1 *	12,9 *	10,2	9,4 *	6,6	7,3 *	4,8			3,6 *	3,6 *	8,85
-4.5 m	13,2 *	13,2 *	18,2 *	18,2 *	12,2 *	10,3	9,0 *	6,6	6,8 *	4,8			5,1 *	4,6	7,80
-6.0 m			15,1 *	15,1 *	10,4 *	10,4 *	7,4 *	6,9					7,0 *	6,6	6,22

TRIPLE ARTICULATION DIPPERSTICK 3750 mm

HEIGHT															
+10.5 m													2,8 *	2,8 *	5,55
+9.0 m							4,1 *	4,1 *					2,3 *	2,3 *	7,40
+7.5 m							4,0 *	4,0 *	3,3 *	3,3 *			2,1 *	2,1 *	8,60
+6.0 m							4,1 *	4,1 *	3,3 *	3,3 *	2,8 *	2,8 *	2,0 *	2,0 *	9,41
+4.5 m					5,9 *	5,9 *	4,5 *	4,5 *	3,5 *	3,5 *	2,8 *	2,8 *	2,0 *	2,0 *	9,92
+3.0 m			13,8 *	13,8 *	7,5 *	7,5 *	5,1 *	5,1 *	3,8 *	3,8 *	2,9 *	2,9 *	2,0 *	2,0 *	10,19
+1.5 m			9,6 *	9,6 *	10,5 *	10,5 *	5,9 *	5,9 *	4,1 *	4,1 *	3,1 *	3,1 *	2,1 *	2,1 *	10,23
0 m	3,6 *	3,6 *	8,3 *	8,3 *	12,8 *	10,4	7,0 *	6,9	4,5 *	4,5 *	3,2 *	3,2 *	2,4 *	2,4 *	10,05
-1.5 m	6,4 *	6,4 *	10,3 *	10,3 *	12,5 *	10,2	7,9 *	6,6	4,8 *	6,8	3,3 *	3,3 *	2,7 *	2,7 *	9,63
-3.0 m			13,6 *	13,6 *	11,2 *	10,2	8,3 *	6,6	5,0 *	4,8			3,3 *	3,3 *	8,94
-4.5 m					8,8 *	8,8 *	6,6 *	6,6 *	4,6 *	4,6 *			3,9 *	3,9 *	7,89

As per ISO 10567 with excavator equipped with bucket. The indicated load is no more than 87% of hydraulic system lifting capacity or 75% of static tipping load. Value marked with an asterisk are limited by the hydraulic system.

EQUIPMENT STANDARD

- Anti-leakage device on hydraulic control valve
- Auto-Idling device
- Batteries, maintenance free
- Cell phone holder with recharge socket
- Centralised boom lubrication
- Cyclone pre-filter
- Double pumps flow device
- Electric fuel pump
- Engine rpm electronic control
- E.T.U. (Easy To Use) multi-function electronic monitor
- Foot pedal or levers travel control
- Front seals hydraulic piping and connections
- Grease bath slewing ring
- Hammer/crusher system predisposition
- HD sealed chains
- Heated seat mechanically suspended
- Horn

- Hydraulic travel end cylinders
- Hydraulically suspended cab with transparent opening roof and automatic air conditioning system
- Monobloc boom or triple articulation
- M.W.S. (Mechatronic Work Selector)
- Power Boost device
- Radio set
- Shoes 600 mm
- S.H.S. (Smart Hydraulic System)
- Swing and travel motors with automatic disc type brakes
- Tier 2 emissioned diesel engine
- Tool kit
- Two-speed intermittent windshield wiper
- Two travel speeds with "Automatic Down Shift device"

EQUIPMENT OPTIONAL

- 2100 mm Dipperstick
- 2400 mm Dipperstick
- 3100 mm Dipperstick
- 3750 mm Dipperstick
- Air suspended heated seat
- Anti-drop valves on boom lift cylinders
- Anti-drop valves on Dipperstick cylinder
- Hydraulic quick coupler predisposition
- Load handling kit

- Mechanical quick coupler
- Multi-purpose, rock and heavy duty buckets with boom/bucket adjustment shims
- Northern countries kit
- Piping on booms for supplementary low flow function
- Shoes 700 - 800 - 900 mm
- Supplementary cab lights
- Supplementary hydraulic function predisposition

Note: standard and optional equipment may vary by country. Consult your NEW HOLLAND dealer for specific details.

BUCKETS

SAE CAPACITY	CECE HEAPED CAPACITY	WIDTH	WEIGHT
0.60 m ³	0.52 m ³	800 mm	620 kg
0.80 m ³	0.69 m ³	1000 mm	720 kg
1.10 m ³	0.95 m ³	1200 mm	820 kg
1.40 m ³	1.20 m ³	1400 mm	930 kg
1.65 m ³	1.42 m ³	1600 mm	1050 kg

AT YOUR OWN DEALERSHIP

The information contained in this brochure is intended to be a general nature only. The NEW HOLLAND KOBELCO CONSTRUCTION MACHINERY S.p.A. company may at any time and from time to time, for technical or other necessary reasons, modify any of the details or specifications of the product described in this brochure. Illustrations do not necessarily show products in standard conditions. The dimensions, weights and capacities shown herein, as well as any conversion data used, are approximate only and are subject to variations within normal manufacturing techniques.

Published by NEW HOLLAND KOBELCO CONSTRUCTION MACHINERY S.p.A. - www.newholland.com
 Printed in Italy - LEADER Firenze - Cod. 73301481 - INB - Printed 02/05



A product of the global alliance between CNH and KOBELCO



NEW HOLLAND IS A BRAND OF CNH.
 CNH: THE TOTAL SOLUTIONS CHOICE FOR YOUR SPECIFIC BUSINESS NEEDS.