

KOMATSU®

PC210LC-10
PC240LC-10
PC290LC-10
PC360LC-10
PC390LC-10
PC490LC-10

Hydraulic Excavator Attachments

FRONT LENGTHS

50' - 65' 15.2 - 19.8 m

Super Long Front



PHOTOS MAY INCLUDE OPTIONAL EQUIPMENT

Super
Long Front

WALK-AROUND

Super Long Front



Photos may include optional equipment

Super Long Front Hydraulic Excavator Attachments

FRONT LENGTHS

50' – 65' 15.2 – 19.8 m



SUPER LONG FRONT ATTACHMENTS

Hydraulic Excavator Attachments

PC210LC-10
PC240LC-10
PC290LC-10

PC360LC-10
PC390LC-10
PC490LC-10

Komatsu Super Long Front Arrangements

are designed and built from the frame up to handle heavy duty production demands. This arrangement includes the base machine with additional factory installed counterweight and frame reinforcement package, optimized hydraulics and a long reach front designed to work with each specific Komatsu model manufactured by Young Corporation. This provides the best combination of machine balance, speed and durability maximizing productivity and reliability.

For Use In

- **Industrial**
 - Waste pond and pit rehabilitation in industrial plants
 - Settling pond rehabilitation in mills and plants
- **Governmental**
 - River and creek bank maintenance and stabilization
 - Dredging of waterways
 - Highway landscaping and sloping
 - Irrigation and drainage ditch maintenance
- **Construction**
 - Dredging of bridge foundations
 - Cofferdam construction
 - Slurry wall construction in light soils
- **Mining**
 - Waterway maintenance
 - Slurry and settling pond maintenance

Arrangement Features

- Extends operating range and utility of the excavator
- Designed for long-life operation and performance
- Arm tucks under boom for lowest possible transport height without disassembly
- Large selection of ditch-cleaning and general purpose buckets
- Functions and operations are identical to a standard excavator
- Komatsu-designed and engineered base unit using all Komatsu components

Boom and Stick Features

- Unique baffling for strength
- Thermal stress relief
- Hardened steel, nickel plated pins for corrosion and wear resistance
- Cast power link for increased durability
- Sealed hardened bushing for long life
- Hardened stick tip for reduced wear

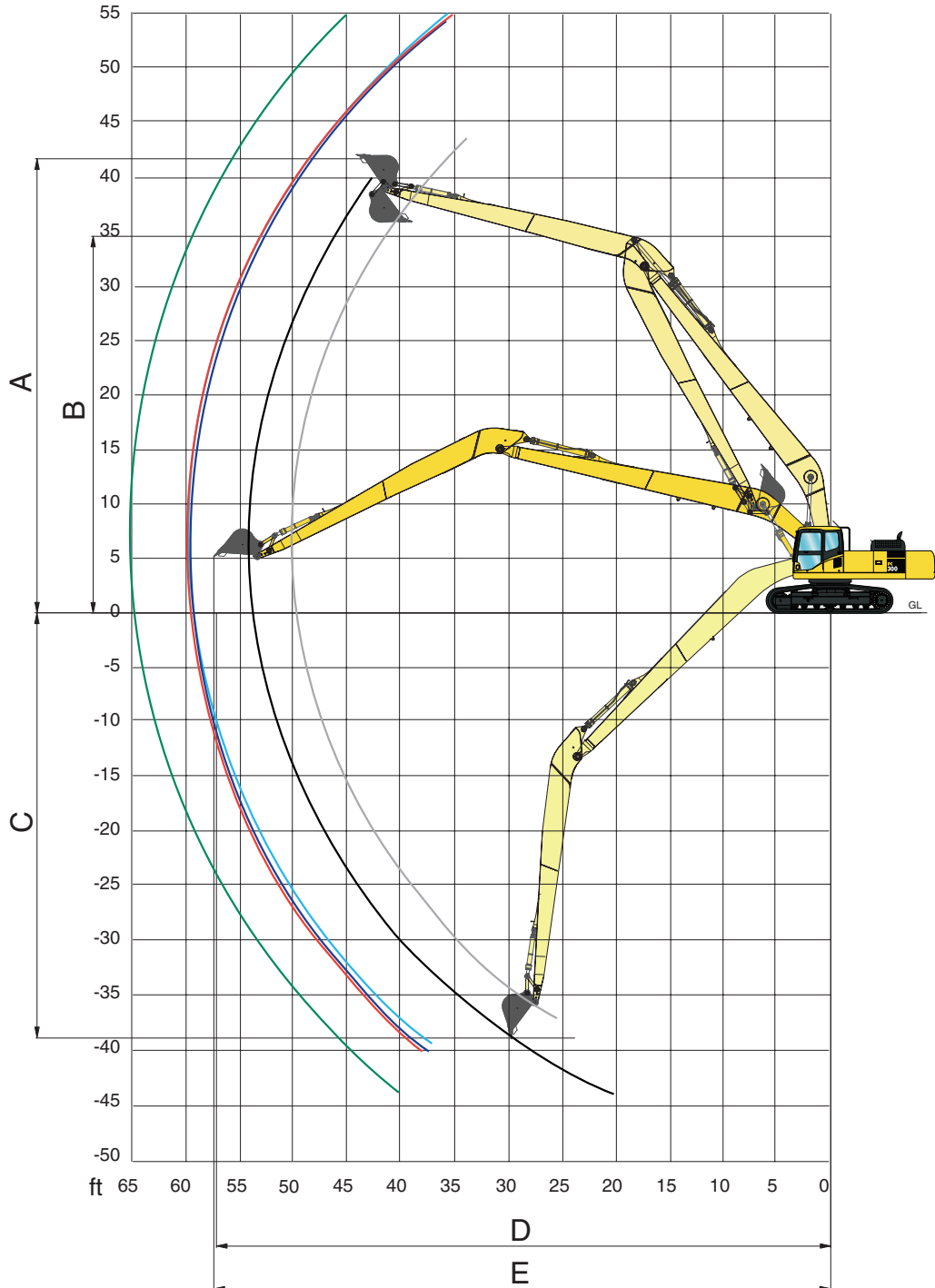
KOMTRAX®

Komtrax equipped machines can send location, SMR and operation maps to a secure website utilizing wireless technology. Machines also relay error codes, cautions, maintenance items, fuel levels, and much more.

SPECIFICATIONS



WORKING RANGES

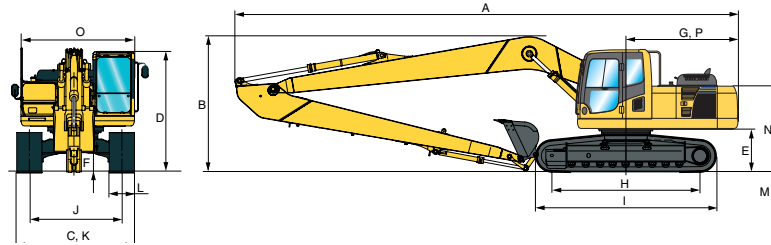


| | Arm | PC210LC-10 | PC240LC-10 | PC240LC-10 | PC290LC-10 | PC360LC-10 | PC390LC-10 | PC490LC-10 |
|---|------------------------------------|------------------------|-----------------------|-----------------------|-----------------------|------------------------|-----------------------|------------------------|
| A | Max. digging height | 13564 mm 44'6" | 13106 mm 43'0" | 17247 mm 56'7" | 16891 mm 55'5" | 16383 mm 53'9" | 16586 mm 54'5" | 16662 mm 54'8" |
| B | Max. dumping height | 11836 mm 38'10" | 11430 mm 37'6" | 15545 mm 51'0" | 15088 mm 49'6" | 14173 mm 46'6" | 14376 mm 47'2" | 14148 mm 46'5" |
| C | Max. digging depth | 11506 mm 37'9" | 13411 mm 44'0" | 13005 mm 42'8" | 12624 mm 41'5" | 12446 mm 40'10" | 12268 mm 40'3" | 14072 mm 46'2" |
| D | Max. digging reach at ground level | 15138 mm 49'8" | 16586 mm 54'5" | 18212 mm 59'9" | 18186 mm 59'8" | 18110 mm 59'5" | 18110 mm 59'5" | 19761 mm 64'10" |
| E | Max. digging reach | 15240 mm 50'0" | 16764 mm 55'0" | 18364 mm 60'3" | 18288 mm 60'0" | 18288 mm 60'0" | 18288 mm 60'0" | 19812 mm 65'0" |

Super Long Front



TRANSPORTATION DIMENSIONS



| | PC210LC-10 | PC240LC-10 | PC290LC-10 | PC360LC-10 | PC390LC-10 | PC490LC-10 F/G | PC490LC-10 V/G |
|----------------------------------------------|-----------------------|---------------------------|-----------------------|------------------------|------------------------|------------------------|------------------------|
| Front Length | 15240 mm 50' | 16764 mm 55' | 18288 mm 60' | 18288 mm 60' | 18288 mm 60' | 19812 mm 65' | 19812 mm 65' |
| A Overall length* | 12370 mm 40'7" | 13395 mm 43'11" ** | 14500 mm 47'7" | 14910 mm 48'11" | 14880 mm 48'10" | 16130 mm 52'11" | 16130 mm 52'11" |
| B Transport height (to top of boom)** | 3175 mm 10'5" | 3200 mm 10'6" *** | 3429 mm 11'3" | 3353 mm 11'0" | 3327 mm 10'11" | 3632 mm 11'11" | 3632 mm 11'11" |
| C Overall width | 3180 mm 10'5" | 3380 mm 11'1" | 3390 mm 11'2" | 3440 mm 11'4" | 3640 mm 11'11" | 3640 mm 11'11" | 3785 mm 12'5" |
| D Overall height (to top of cab) | 3040 mm 10'0" | 3055 mm 10'0" | 3175 mm 10'5" | 3130 mm 10'3" | 3200 mm 10'6" | 3265 mm 10'9" | 3265 mm 10'9" |
| E Ground clearance (counterweight) | 1085 mm 3'7" | 1100 mm 3'7" | 1215 mm 4'0" | 1185 mm 3'11" | 1320 mm 4'4" | 1320 mm 4'4" | 1320 mm 4'4" |
| F Ground clearance (minimum) | 440 mm 1'5" | 412 mm 1'4" | 498 mm 1'8" | 500 mm 1'8" | 550 mm 1'10" | 462 mm 1'6" | 462 mm 1'6" |
| G Tail swing radius | 2750 mm 9'0" | 2900 mm 9'6" | 2940 mm 9'8" | 3450 mm 11'4" | 3450 mm 11'4" | 3645 mm 12'0" | 3645 mm 12'0" |
| H Track length on ground | 3655 mm 12'0" | 3845 mm 12'7" | 4030 mm 13'3" | 4030 mm 13'3" | 4350 mm 14'3" | 4350 mm 14'3" | 4350 mm 14'3" |
| I Track length | 4450 mm 14'7" | 4640 mm 15'3" | 4955 mm 16'3" | 4955 mm 16'3" | 5355 mm 17'7" | 5355 mm 17'7" | 5355 mm 17'7" |
| J Track gauge | 2380 mm 7'10" | 2580 mm 8'6" | 2590 mm 8'6" | 2590 mm 8'6" | 2740 mm 9'0" | 2740 mm 9'0" | 2885 mm 9'6" |
| K Width of crawler | 3180 mm 10'5" | 3380 mm 11'1" | 3390 mm 11'2" | 3440 mm 11'4" | 3640 mm 11'11" | 3640 mm 11'11" | 3785 mm 12'5" |
| L Shoe width | 800 mm 31.5" | 800 mm 31.5" | 800 mm 31.5" | 850 mm 33.5" | 900 mm 35.5" | 900 mm 35.5" | 900 mm 35.5" |
| M Grouser height | 25 mm 1.0" | 25 mm 1.0" | 36 mm 1.4" | 36 mm 1.4" | 37 mm 1.5" | 37 mm 1.5" | 37 mm 1.5" |
| N Machine cab height | 2095 mm 6'10" | 2110 mm 6'11" | 2225 mm 7'4" | 2580 mm 8'6" | 2688 mm 8'10" | 2885 mm 9'6" | 2885 mm 9'6" |
| O Machine cab width | 2710 mm 8'11" | 2710 mm 8'11" | 2710 mm 8'11" | 2995 mm 9'10" | 2995 mm 9'10" | 2995 mm 9'10" | 2995 mm 9'10" |
| P Distance, swing center to rear end | 2710 mm 8'11" | 2905 mm 9'6" | 2905 mm 9'6" | 3405 mm 11'2" | 3405 mm 11'2" | 3605 mm 11'10" | 3605 mm 11'10" |

*60' A 47'7" **60' B 11'0"



RECOMMENDED BUCKETS

| Model | Bucket | | | |
|------------|-------------------|------------------------------------------------|-----------------------|------------------|
| | Standard Width | Bucket Volume | Bucket Weight | Bucket Pin Class |
| PC210LC-10 | 1.22 m 48" | 0.46 m ³ 0.6 yd³ | 288 kg 635 lb | PC138 |
| PC240LC-10 | 1.52 m 60" | 0.57 m ³ 0.75 yd³ | 324 kg 714 lb | PC138 |
| PC290LC-10 | 1.52 m 60" | 0.57 m ³ 0.75 yd³ | 324 kg 714 lb | PC138 |
| PC360LC-10 | 1.52 m 60" | 0.96 m ³ 1.25 yd³ | 618 kg 1363 lb | PC200 |
| PC390LC-10 | 1.52 m 60" | 0.96 m ³ 1.25 yd³ | 618 kg 1363 lb | PC200 |
| PC490LC-10 | 1.52 m 60" | 0.96 m ³ 1.25 yd³ | 618 kg 1363 lb | PC200 |



SHIPPING WEIGHT (APPROXIMATE)

| Model | Front Length | Boom Weight | Arm Weight |
|------------|---------------------|--------------------------|-------------------------|
| PC210LC-10 | 15240 mm 50' | 2926 kg 6,451 lb | 1570 kg 3,461 lb |
| PC240LC-10 | 16764 mm 55' | 3075 kg 6,779 lb | 1622 kg 3,575 lb |
| PC240LC-10 | 18288 mm 60' | 2614 kg 5,762 lb | 1491 kg 3,288 lb |
| PC290LC-10 | 18288 mm 60' | 3343 kg 7,369 lb | 1654 kg 3,647 lb |
| PC360LC-10 | 18288 mm 60' | 4546 kg 10,021 lb | 2423 kg 5,342 lb |
| PC390LC-10 | 18288 mm 60' | 4546 kg 10,021 lb | 2423 kg 5,342 lb |
| PC490LC-10 | 19812 mm 65' | 5795 kg 12,776 lb | 3001 kg 6,617 lb |



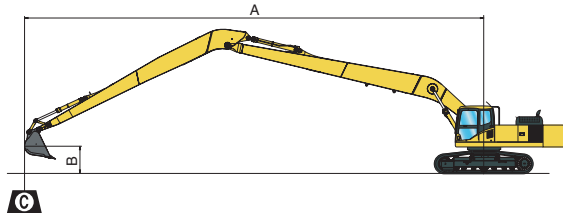
OPERATING WEIGHT (APPROXIMATE) (LESS BUCKET)

| Model | Shoe | Operating Weight |
|---------------------------|---------------------|----------------------------|
| PC210LC-10 | 700 mm 28" | 23927 kg 52,751 lb |
| | 800 mm 31.5" | 24207 kg 53,368 lb |
| PC240LC-10 | 700 mm 28" | 26255 kg 57,882 lb |
| | 800 mm 31.5" | 26545 kg 58,521 lb |
| PC290LC-10 | 700 mm 28" | 30582 kg 67,422 lb |
| | 800 mm 31.5" | 30962 kg 68,260 lb |
| | 850 mm 33.5" | 31342 kg 69,098 lb |
| PC360LC-10 | 700 mm 28" | 35960 kg 79,279 lb |
| | 800 mm 31.5" | 36340 kg 80,117 lb |
| | 850 mm 33.5" | 36717 kg 80,947 lb |
| PC390LC-10 | 700 mm 28" | 40516 kg 89,322 lb |
| | 800 mm 31.5" | 41019 kg 90,431 lb |
| | 900 mm 35.5" | 41522 kg 91,540 lb |
| PC490LC-10 Fixed Gauge | 700 mm 28" | 50157 kg 110,578 lb |
| | 800 mm 31.5" | 50648 kg 111,659 lb |
| PC490LC-10 Variable Gauge | 900 mm 35.5" | 51138 kg 112,739 lb |
| | 700 mm 28" | 51232 kg 112,948 lb |
| PC490LC-10 Variable Gauge | 800 mm 31.5" | 51695 kg 113,966 lb |
| | 900 mm 35.5" | 52213 kg 115,109 lb |

LIFT CAPACITIES



PC210LC-10 LIFTING CAPACITY



- A: Reach from swing center
- B: Bucket hook height
- C: Lifting capacity
- Cf: Rating over front
- Cs: Rating over side

Conditions :

- Shoe: 700 mm 28"
- Counterweight: 4728 kg 10,423 lbs

Front: 15.2 m 50'

Unit: kg lb

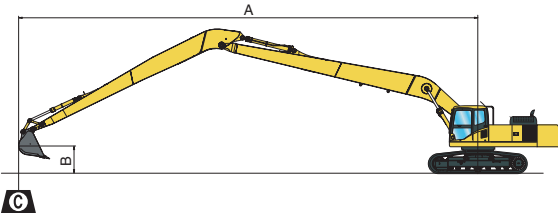
| B \ A | 4.6 m 15' | | 6.1 m 20' | | 7.6 m 25' | | 9.1 m 30' | | 10.7 m 35' | | 12.2 m 40' | | 13.7 m 45' | |
|----------------|-----------|----------|-----------|----------|-----------|-------|-----------|---------|------------|---------|------------|-------|------------|-------|
| | Cf | Cs | Cf | Cs | Cf | Cs | Cf | Cs | Cf | Cs | Cf | Cs | Cf | Cs |
| 10.7 m 35' | | | | | | | | | * 200 | * 200 | | | | |
| | | | | | | | | | * 400 | * 400 | | | | |
| 9.1 m 30' | | | | | | | | | * 2400 | * 2400 | * 2500 | 1800 | | |
| | | | | | | | | | * 5,200 | * 5,200 | * 5,400 | 4,000 | | |
| 7.6 m 25' | | | | | | | | | * 2500 | * 2500 | * 2500 | 1800 | | |
| | | | | | | | | | * 5,400 | * 5,400 | * 5,400 | 4,000 | | |
| 6.1 m 20' | | | | | | | * 2700 | * 2700 | * 2600 | 2400 | * 2500 | 1800 | | |
| | | | | | | | * 5,900 | * 5,900 | * 5,700 | 5,200 | * 5,600 | 3,900 | | |
| 4.6 m 15' | | | | | * 3300 | 3300 | * 3000 | 3000 | * 2800 | 2200 | * 2700 | 1700 | 2100 | 1300 |
| | | | | | * 7,300 | 7,300 | * 6,600 | 6,500 | * 6,200 | 4,900 | * 5,900 | 3,700 | 4,600 | 2,800 |
| 3.0 m 10' | * 6300 | * 6300 | * 4700 | * 4700 | * 3900 | 3600 | * 3400 | 2700 | * 3100 | 2000 | 2500 | 1600 | 2000 | 1200 |
| | * 13,900 | * 13,900 | * 10,400 | * 10,400 | * 8,600 | 8,000 | * 7,500 | 5,900 | * 6,800 | 4,500 | 5,600 | 3,500 | 4,500 | 2,600 |
| 1.5 m 5' | * 8100 | 6500 | * 5800 | 4500 | * 4500 | 3200 | * 3800 | 2500 | 3000 | 1900 | 2500 | 1500 | 2000 | 1100 |
| | * 17,800 | 14,400 | * 12,700 | 9,800 | * 10,000 | 7,100 | * 8,400 | 5,400 | 6,700 | 4,100 | 5,400 | 3,200 | 4,300 | 2,500 |
| 0 m 0' | * 4900 | * 4900 | * 6600 | 3900 | 4800 | 2900 | 3600 | 2200 | 2900 | 1700 | 2300 | 1400 | 1900 | 1100 |
| | * 10,800 | * 10,800 | * 14,500 | 8,600 | 10,500 | 6,400 | 8,000 | 4,900 | 6,400 | 3,800 | 5,100 | 3,000 | 4,200 | 2,400 |
| -1.5 m -5' | * 4500 | * 4500 | 6200 | 3500 | 4500 | 2600 | 3500 | 2000 | 2800 | 1600 | 2200 | 1300 | 1900 | 1000 |
| | * 10,000 | * 10,000 | 13,600 | 7,800 | 9,900 | 5,800 | 7,600 | 4,500 | 6,100 | 3,500 | 4,900 | 2,800 | 4,100 | 2,300 |
| -3.0 m -10' | * 4900 | * 4900 | 6000 | 3400 | 4300 | 2500 | 3300 | 1900 | 2700 | 1500 | 2200 | 1200 | | |
| | * 10,800 | * 10,800 | 13,200 | 7,400 | 9,500 | 5,400 | 7,300 | 4,200 | 5,900 | 3,300 | 4,800 | 2,700 | | |
| -4.6 m -15' | * 5600 | * 5100 | 5900 | 3300 | 4300 | 2400 | 3300 | 1900 | 2600 | 1500 | 2200 | 1200 | | |
| | * 12,300 | * 11,200 | 13,000 | 7,300 | 9,400 | 5,300 | 7,200 | 4,100 | 5,800 | 3,200 | 4,800 | 2,700 | | |
| -6.1 m -20' | * 6500 | 5200 | 6000 | 3400 | 4300 | 2400 | 3300 | 1900 | 2600 | 1500 | | | | |
| | * 14,400 | 11,500 | 13,100 | 7,400 | 9,400 | 5,300 | 7,200 | 4,100 | 5,800 | 3,300 | | | | |
| -7.6 m -25' | * 7800 | 5500 | 6100 | 3500 | 4400 | 2500 | 3400 | 2000 | | | | | | |
| | * 17,200 | 12,000 | 13,500 | 7,700 | 9,600 | 5,500 | 7,400 | 4,300 | | | | | | |
| -9.1 m -30' | * 7600 | 5800 | * 6000 | 3700 | 4500 | 2700 | | | | | | | | |
| | * 16,800 | 12,800 | * 13,100 | 8,200 | 10,000 | 5,900 | | | | | | | | |

*Load is limited by hydraulic capacity rather than tipping. Ratings are based on ISO standard No. 10567. Rated loads do not exceed 87% of hydraulic lift capacity or 75% of tipping load.

LIFT CAPACITIES



PC290LC-10 LIFTING CAPACITY



- A: Reach from swing center
- B: Bucket hook height
- C: Lifting capacity
- Cf: Rating over front
- Cs: Rating over side

Conditions :

- Shoe: 800 mm **31.5"**
- Counterweight: 5750 kg **12,677 lbs**

Front: 18.3 m 60'

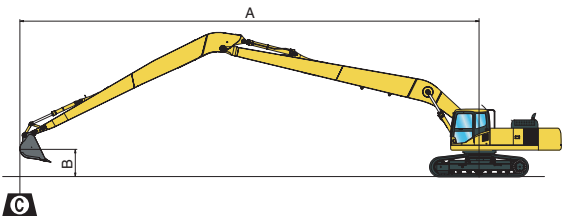
Unit: kg lb

| B | A | | 3 m 10' | | 4.6 m 15' | | 6.1 m 20' | | 7.6 m 25' | | 9.1 m 30' | | 10.7 m 35' | | 12.2 m 40' | | 13.7 m 45' | | 15.2 m 50' | | 16.8 m 55' | | |
|---------------|----|----|---------|----|-----------|----|-----------|----|-----------|----|-----------|----|------------|----|------------|----|------------|----|------------|----|------------|----|--|
| | Cf | Cs | Cf | Cs | Cf | Cs | Cf | Cs | Cf | Cs | Cf | Cs | Cf | Cs | Cf | Cs | Cf | Cs | Cf | Cs | Cf | Cs | |
| 15.2 m 50' | | | | | | | | | | | | | | | | | | | | | | | |
| 13.7 m 45' | | | | | | | | | | | | | | | | | | | | | | | |
| 12.2 m 40' | | | | | | | | | | | | | | | | | | | | | | | |
| 10.7 m 35' | | | | | | | | | | | | | | | | | | | | | | | |
| 9.1 m 30' | | | | | | | | | | | | | | | | | | | | | | | |
| 7.6 m 25' | | | | | | | | | | | | | | | | | | | | | | | |
| 6.1 m 20' | | | | | | | | | | | | | | | | | | | | | | | |
| 4.6 m 15' | | | | | | | | | | | | | | | | | | | | | | | |
| 3.0 m 10' | | | | | | | | | | | | | | | | | | | | | | | |
| 1.5 m 5' | | | | | | | | | | | | | | | | | | | | | | | |
| 0 m | | | | | | | | | | | | | | | | | | | | | | | |
| -1.5 m | | | | | | | | | | | | | | | | | | | | | | | |
| -5' | | | | | | | | | | | | | | | | | | | | | | | |
| -10' | | | | | | | | | | | | | | | | | | | | | | | |
| -3.0 m | | | | | | | | | | | | | | | | | | | | | | | |
| -10' | | | | | | | | | | | | | | | | | | | | | | | |
| -4.6 m | | | | | | | | | | | | | | | | | | | | | | | |
| -15' | | | | | | | | | | | | | | | | | | | | | | | |
| -6.1 m | | | | | | | | | | | | | | | | | | | | | | | |
| -20' | | | | | | | | | | | | | | | | | | | | | | | |
| -7.6 m | | | | | | | | | | | | | | | | | | | | | | | |
| -25' | | | | | | | | | | | | | | | | | | | | | | | |
| -9.1 m | | | | | | | | | | | | | | | | | | | | | | | |
| -30' | | | | | | | | | | | | | | | | | | | | | | | |
| -10.7 m | | | | | | | | | | | | | | | | | | | | | | | |
| -35' | | | | | | | | | | | | | | | | | | | | | | | |
| -12.2 m | | | | | | | | | | | | | | | | | | | | | | | |
| -40' | | | | | | | | | | | | | | | | | | | | | | | |

*Load is limited by hydraulic capacity rather than tipping. Ratings are based on ISO standard No. 10567. Rated loads do not exceed 87% of hydraulic lift capacity or 75% of tipping load.



PC360LC-10 LIFTING CAPACITY



- A: Reach from swing center
 B: Bucket hook height
 C: Lifting capacity
 Cf: Rating over front
 Cs: Rating over side
- Conditions :
 • Shoe: 850 mm **33.5"**
 • Counterweight: 8105 kg **17,868 lbs**

Front: 18.3 m 60'

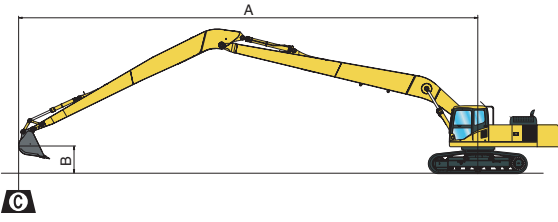
Unit: kg lb

| B | A | | 4.6 m 15' | | 6.1 m 20' | | 7.6 m 25' | | 9.1 m 30' | | 10.7 m 35' | | 12.2 m 40' | | 13.7 m 45' | | 15.2 m 50' | | 16.8 m 55' | | |
|-----------------|----------|----------|-----------|----------|-----------|----------|-----------|----------|-----------|---------|------------|-------|------------|---------|------------|---------|------------|-------|------------|----|--|
| | Cf | Cs | Cf | Cs | Cf | Cs | Cf | Cs | Cf | Cs | Cf | Cs | Cf | Cs | Cf | Cs | Cf | Cs | Cf | Cs | |
| 12.2 m 40' | | | | | | | | | | | | | * 3000 | * 3000 | | | | | | | |
| 10.7 m 35' | | | | | | | | | | | | | * 2900 | * 2900 | * 2800 | * 2800 | | | | | |
| 9.1 m 30' | | | | | | | | | | | | | * 6,400 | * 6,400 | * 6,100 | * 6,100 | | | | | |
| 7.6 m 25' | | | | | | | | | | | | | * 3000 | * 3000 | * 2800 | * 2800 | * 2300 | 2200 | | | |
| 6.1 m 20' | | | | | | | | | | | | | * 6,500 | * 6,500 | * 6,100 | * 6,100 | * 5,000 | 4,900 | | | |
| 4.6 m 15' | | | | | * 5000 | * 5000 | * 4300 | * 4300 | * 3700 | * 3700 | * 3300 | 3300 | * 3000 | 3000 | * 2800 | 2800 | * 2600 | 2200 | | | |
| 3.0 m 10' | * 9900 | * 9900 | * 7100 | * 7100 | * 5600 | * 5600 | * 4600 | * 4600 | * 4000 | 3900 | * 3500 | 3000 | * 3100 | 2400 | * 2800 | 1900 | * 2500 | 1500 | | | |
| 1.5 m 5' | * 21,700 | * 21,700 | * 15,700 | * 15,700 | * 12,300 | * 12,300 | * 10,200 | * 10,200 | * 8,800 | 8,500 | * 7,700 | 6,700 | * 6,900 | 5,300 | * 6,200 | 4,200 | * 5,600 | 3,200 | | | |
| 0 m 0' | * 4800 | * 4800 | * 8000 | * 8000 | * 6100 | 5900 | * 5000 | 4500 | * 4200 | 3500 | * 3600 | 2800 | * 3200 | 2200 | * 2900 | 1800 | * 2600 | 1400 | | | |
| -1.5 m -5' | * 10,600 | * 10,600 | * 17,600 | * 17,600 | * 13,500 | 13,000 | * 11,000 | 9,900 | * 9,300 | 7,800 | * 8,000 | 6,200 | * 7,100 | 4,900 | * 6,300 | 3,900 | * 5,700 | 3,100 | | | |
| -3.0 m -10' | * 3100 | * 3100 | * 7800 | 7000 | * 6500 | 5300 | * 5300 | 4100 | * 4400 | 3200 | * 3800 | 2600 | * 3300 | 2100 | * 2900 | 1700 | * 2600 | 1300 | | | |
| -4.6 m -15' | * 6,800 | * 6,800 | * 17,200 | 15,500 | * 14,400 | 11,600 | * 11,600 | 9,000 | * 9,700 | 7,100 | * 8,300 | 5,700 | * 7,300 | 4,600 | * 6,400 | 3,700 | * 5,700 | 2,900 | | | |
| -6.1 m -20' | * 3000 | * 3000 | * 5900 | 5900 | * 6800 | 4800 | * 5500 | 3700 | * 4500 | 3000 | * 3900 | 2400 | * 3400 | 2000 | * 2900 | 1600 | | | | | |
| -7.6 m -25' | * 6,500 | * 6,500 | * 13,000 | 13,000 | * 14,900 | 10,500 | * 12,000 | 8,200 | * 10,000 | 6,500 | * 8,500 | 5,300 | * 7,400 | 4,300 | * 6,400 | 3,500 | | | | | |
| -9.1 m -30' | * 3300 | * 3300 | * 5600 | 5600 | * 6900 | 4500 | * 5500 | 3500 | * 4600 | 2800 | * 3900 | 2200 | * 3300 | 1800 | * 2900 | 1500 | | | | | |
| -10.7 m -35' | * 7,200 | * 7,200 | * 12,300 | 12,300 | * 15,100 | 9,900 | * 12,100 | 7,700 | * 10,100 | 6,100 | * 8,500 | 4,900 | * 7,300 | 4,000 | * 6,300 | 3,300 | | | | | |
| | * 3800 | * 3800 | * 5800 | 5800 | * 6700 | 4300 | * 5500 | 3300 | * 4500 | 2600 | * 3800 | 2100 | * 3200 | 1800 | * 2700 | 1500 | | | | | |
| | * 8,300 | * 8,300 | * 12,800 | 12,800 | * 14,800 | 9,500 | * 12,000 | 7,300 | * 10,000 | 5,800 | * 8,400 | 4,700 | * 7,100 | 3,900 | * 6,000 | 3,300 | | | | | |
| | * 4400 | * 4400 | * 6500 | 6000 | * 6400 | 4300 | * 5200 | 3300 | * 4400 | 2600 | * 3600 | 2100 | * 3000 | 1800 | | | | | | | |
| | * 9,700 | * 9,700 | * 14,200 | 13,100 | * 14,000 | 9,400 | * 11,500 | 7,200 | * 9,600 | 5,700 | * 8,000 | 4,700 | * 6,700 | 3,900 | | | | | | | |
| | * 5200 | * 5200 | * 7200 | 6100 | * 5800 | 4300 | * 4800 | 3300 | * 4000 | 2600 | * 3300 | 2100 | * 2600 | 1800 | | | | | | | |
| | * 11,400 | * 11,400 | * 15,800 | 13,400 | * 12,800 | 9,500 | * 10,600 | 7,300 | * 8,800 | 5,800 | * 7,300 | 4,700 | * 5,800 | 4,000 | | | | | | | |
| | * 6100 | * 6100 | * 6100 | 6100 | * 5000 | 4500 | * 4200 | 3400 | * 3400 | 2700 | * 2700 | 2200 | | | | | | | | | |
| | * 13,500 | * 13,500 | * 13,400 | 13,400 | * 11,100 | 9,800 | * 9,200 | 7,500 | * 7,500 | 6,000 | * 6,000 | 4,900 | | | | | | | | | |
| | | | * 4600 | * 4600 | * 3900 | * 3900 | * 3200 | * 3200 | * 2500 | * 2500 | | | | | | | | | | | |
| | | | * 10,200 | * 10,200 | * 8,500 | * 8,500 | * 7,000 | * 7,000 | * 5,400 | * 5,400 | | | | | | | | | | | |

LIFT CAPACITIES



PC390LC-10 LIFTING CAPACITY



- A: Reach from swing center
- B: Bucket hook height
- C: Lifting capacity
- Cf: Rating over front
- Cs: Rating over side

Conditions :

- Shoe: 800 mm **31.5"**
- Counterweight: 8105 kg **17,868 lbs**

Front: 18.3 m 60'

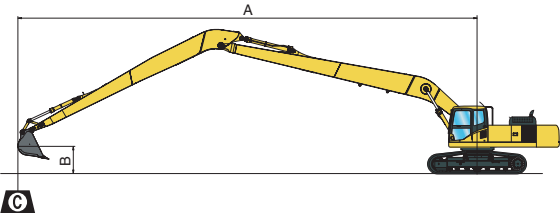
Unit: kg lb

| B | A | | 3 m 10' | | 4.6 m 15' | | 6.1 m 20' | | 7.6 m 25' | | 9.1 m 30' | | 10.7 m 35' | | 12.2 m 40' | | 13.7 m 45' | | 15.2 m 50' | | 16.8 m 55' | | |
|---------------|----|----|---------|----|-----------|----|-----------|----|-----------|----|-----------|----|------------|-------|------------|----------|------------|----------|------------|----------|------------|----------|--|
| | Cf | Cs | Cf | Cs | Cf | Cs | Cf | Cs | Cf | Cs | Cf | Cs | Cf | Cs | Cf | Cs | Cf | Cs | Cf | Cs | Cf | Cs | |
| 15.2 m 50' | | | | | | | | | | | | | * 300 | * 300 | | | | | | | | | |
| 13.7 m 45' | | | | | | | | | | | | | * 600 | * 600 | | | | | | | | | |
| 12.2 m 40' | | | | | | | | | | | | | | | * 2500 | * 2500 | | | | | | | |
| 10.7 m 35' | | | | | | | | | | | | | | | * 5,500 | * 5,500 | | | | | | | |
| 9.1 m 30' | | | | | | | | | | | | | | | * 3000 | * 3000 | | | | | | | |
| 7.6 m 25' | | | | | | | | | | | | | | | * 6,500 | * 6,500 | | | | | | | |
| 6.1 m 20' | | | | | | | | | | | | | | | * 2900 | * 2900 | * 2800 | * 2800 | | | | | |
| 4.6 m 15' | | | | | | | | | | | | | | | * 6,400 | * 6,400 | * 6,100 | * 6,100 | | | | | |
| 3.0 m 10' | | | | | | | | | | | | | | | * 3000 | * 3000 | * 2800 | * 2800 | * 2500 | * 2500 | | | |
| 1.5 m 5' | | | | | | | | | | | | | | | * 6,500 | * 6,500 | * 6,100 | * 6,100 | * 5,400 | * 5,400 | | | |
| 0 m | | | | | | | | | | | | | | | * 3100 | * 3100 | * 2900 | * 2900 | * 2700 | * 2700 | | | |
| -1.5 m | | | | | | | | | | | | | | | * 3400 | * 3400 | * 3200 | * 3200 | * 3000 | * 3000 | | | |
| -5' | | | | | | | | | | | | | | | * 7,400 | * 7,400 | * 6,800 | * 6,800 | * 6,300 | * 6,300 | * 5,800 | * 5,800 | |
| -10' | | | | | | | | | | | | | | | * 3500 | * 3500 | * 3200 | * 3200 | * 2900 | * 2900 | * 2700 | * 2700 | |
| -15' | | | | | | | | | | | | | | | * 4000 | * 4000 | * 3800 | * 3800 | * 3400 | * 3400 | * 3000 | * 3000 | |
| -20' | | | | | | | | | | | | | | | * 8,800 | * 8,800 | * 7,800 | * 7,800 | * 7,000 | * 7,000 | * 6,400 | * 6,400 | |
| -25' | | | | | | | | | | | | | | | * 5100 | * 5100 | * 4300 | * 4300 | * 3800 | * 3800 | * 3400 | * 3400 | |
| -30' | | | | | | | | | | | | | | | * 11,300 | * 11,300 | * 9,500 | * 9,500 | * 8,300 | * 8,300 | * 7,400 | * 7,400 | |
| -35' | | | | | | | | | | | | | | | * 8,800 | * 8,800 | * 8,300 | * 8,300 | * 7,400 | * 7,400 | * 6,700 | * 6,700 | |
| -40' | | | | | | | | | | | | | | | * 5700 | * 5700 | * 4700 | * 4700 | * 4000 | * 4000 | * 3500 | * 3500 | |
| | | | | | | | | | | | | | | | * 10,100 | * 10,100 | * 8,800 | * 8,800 | * 7,700 | * 7,700 | * 6,900 | * 6,900 | |
| | | | | | | | | | | | | | | | * 22,200 | * 22,200 | * 15,900 | * 15,900 | * 12,500 | * 12,500 | * 10,300 | * 10,300 | |
| | | | | | | | | | | | | | | | * 4400 | * 4400 | * 8100 | * 8100 | * 6200 | * 6200 | * 5000 | * 5000 | |
| | | | | | | | | | | | | | | | * 9,700 | * 9,700 | * 17,800 | * 17,800 | * 13,600 | * 13,600 | * 11,100 | * 11,100 | |
| | | | | | | | | | | | | | | | * 3000 | * 3000 | * 7400 | * 7400 | * 6600 | * 6600 | * 6500 | * 6500 | |
| | | | | | | | | | | | | | | | * 6,700 | * 6,700 | * 16,200 | * 16,200 | * 14,500 | * 14,500 | * 14,400 | * 11,700 | |
| | | | | | | | | | | | | | | | * 3000 | * 3000 | * 5800 | * 5800 | * 6800 | * 6800 | * 6100 | * 5500 | |
| | | | | | | | | | | | | | | | * 6,500 | * 6,500 | * 12,800 | * 12,800 | * 15,000 | * 13,400 | * 12,000 | * 10,500 | |
| | | | | | | | | | | | | | | | * 3300 | * 3300 | * 5600 | * 5600 | * 6800 | * 5800 | * 5500 | * 4500 | |
| | | | | | | | | | | | | | | | * 7,300 | * 7,300 | * 12,300 | * 12,300 | * 15,000 | * 12,800 | * 12,100 | * 9,900 | |
| | | | | | | | | | | | | | | | * 3800 | * 3800 | * 5900 | * 5900 | * 6700 | * 5600 | * 5400 | * 4400 | |
| | | | | | | | | | | | | | | | * 8,400 | * 8,400 | * 13,000 | * 13,000 | * 14,700 | * 12,400 | * 11,900 | * 9,600 | |
| | | | | | | | | | | | | | | | * 4500 | * 4500 | * 6500 | * 6500 | * 6300 | * 5600 | * 5200 | * 4300 | |
| | | | | | | | | | | | | | | | * 9,900 | * 9,900 | * 14,400 | * 14,400 | * 13,900 | * 12,400 | * 11,400 | * 9,500 | |
| | | | | | | | | | | | | | | | * 5300 | * 5300 | * 7000 | * 7000 | * 5700 | * 5700 | * 4700 | * 4400 | |
| | | | | | | | | | | | | | | | * 11,600 | * 11,600 | * 15,500 | * 15,500 | * 12,600 | * 12,500 | * 10,400 | * 9,600 | |
| | | | | | | | | | | | | | | | * 6300 | * 6300 | * 6000 | * 6000 | * 4900 | * 4900 | * 4000 | * 4000 | |
| | | | | | | | | | | | | | | | * 13,800 | * 13,800 | * 13,100 | * 13,100 | * 10,800 | * 10,800 | * 8,900 | * 8,900 | |
| | | | | | | | | | | | | | | | * 3700 | * 3700 | * 3000 | * 3000 | * 3000 | * 2300 | * 2300 | * 2300 | |
| | | | | | | | | | | | | | | | * 8,100 | * 8,100 | * 6,600 | * 6,600 | * 5,100 | * 5,100 | * 5,100 | * 5,100 | |

*Load is limited by hydraulic capacity rather than tipping. Ratings are based on ISO standard No. 10567. Rated loads do not exceed 87% of hydraulic lift capacity or 75% of tipping load.



PC490LC-10 LIFTING CAPACITY



A: Reach from swing center
 B: Bucket hook height
 C: Lifting capacity
 Cf: Rating over front
 Cs: Rating over side

Conditions :

- Shoe: 700 mm 28"
- Counterweight: 12317 kg 27,154 lbs

Front: 19.8 m 65' Fixed Undercarriage

Unit: kg lb

| B | A | 4.6 m 15' | | 6.1 m 20' | | 7.6 m 25' | | 9.1 m 30' | | 10.7 m 35' | | 12.2 m 40' | | 13.7 m 45' | | 15.2 m 50' | | 16.8 m 55' | | 18.3 m 60' | |
|-----------------|----|-----------|----|-----------|----|-----------|----|-----------|----|------------|----|------------|----|------------|----|------------|----|------------|----|------------|--|
| | Cf | Cs | Cf | Cs | Cf | Cs | Cf | Cs | Cf | Cs | Cf | Cs | Cf | Cs | Cf | Cs | Cf | Cs | Cf | Cs | |
| 15.2 m 50' | | | | | | | | | | | | | | | | | | | | | |
| 13.7 m 45' | | | | | | | | | | | | | | | | | | | | | |
| 12.2 m 40' | | | | | | | | | | | | | | | | | | | | | |
| 10.7 m 35' | | | | | | | | | | | | | | | | | | | | | |
| 9.1 m 30' | | | | | | | | | | | | | | | | | | | | | |
| 7.6 m 25' | | | | | | | | | | | | | | | | | | | | | |
| 6.1 m 20' | | | | | | | | | | | | | | | | | | | | | |
| 4.6 m 15' | | | | | | | | | | | | | | | | | | | | | |
| 3.0 m 10' | | | | | | | | | | | | | | | | | | | | | |
| 1.5 m 5' | | | | | | | | | | | | | | | | | | | | | |
| 0 m 0' | | | | | | | | | | | | | | | | | | | | | |
| -1.5 m -5' | | | | | | | | | | | | | | | | | | | | | |
| -3.0 m -10' | | | | | | | | | | | | | | | | | | | | | |
| -4.6 m -15' | | | | | | | | | | | | | | | | | | | | | |
| -6.1 m -20' | | | | | | | | | | | | | | | | | | | | | |
| -7.6 m -25' | | | | | | | | | | | | | | | | | | | | | |
| -9.1 m -30' | | | | | | | | | | | | | | | | | | | | | |
| -10.7 m -35' | | | | | | | | | | | | | | | | | | | | | |
| -12.2 m -40' | | | | | | | | | | | | | | | | | | | | | |

Front: 19.8 m 65' Variable Undercarriage

Unit: kg lb

| B | A | 4.6 m 15' | | 6.1 m 20' | | 7.6 m 25' | | 9.1 m 30' | | 10.7 m 35' | | 12.2 m 40' | | 13.7 m 45' | | 15.2 m 50' | | 16.8 m 55' | | 18.3 m 60' | |
|-----------------|----|-----------|----|-----------|----|-----------|----|-----------|----|------------|----|------------|----|------------|----|------------|----|------------|----|------------|--|
| | Cf | Cs | Cf | Cs | Cf | Cs | Cf | Cs | Cf | Cs | Cf | Cs | Cf | Cs | Cf | Cs | Cf | Cs | Cf | Cs | |
| 15.2 m 50' | | | | | | | | | | | | | | | | | | | | | |
| 13.7 m 45' | | | | | | | | | | | | | | | | | | | | | |
| 12.2 m 40' | | | | | | | | | | | | | | | | | | | | | |
| 10.7 m 35' | | | | | | | | | | | | | | | | | | | | | |
| 9.1 m 30' | | | | | | | | | | | | | | | | | | | | | |
| 7.6 m 25' | | | | | | | | | | | | | | | | | | | | | |
| 6.1 m 20' | | | | | | | | | | | | | | | | | | | | | |
| 4.6 m 15' | | | | | | | | | | | | | | | | | | | | | |
| 3.0 m 10' | | | | | | | | | | | | | | | | | | | | | |
| 1.5 m 5' | | | | | | | | | | | | | | | | | | | | | |
| 0 m 0' | | | | | | | | | | | | | | | | | | | | | |
| -1.5 m -5' | | | | | | | | | | | | | | | | | | | | | |
| -3.0 m -10' | | | | | | | | | | | | | | | | | | | | | |
| -4.6 m -15' | | | | | | | | | | | | | | | | | | | | | |
| -6.1 m -20' | | | | | | | | | | | | | | | | | | | | | |
| -7.6 m -25' | | | | | | | | | | | | | | | | | | | | | |
| -9.1 m -30' | | | | | | | | | | | | | | | | | | | | | |
| -10.7 m -35' | | | | | | | | | | | | | | | | | | | | | |
| -12.2 m -40' | | | | | | | | | | | | | | | | | | | | | |

*Load is limited by hydraulic capacity rather than tipping. Ratings are based on ISO standard No. 10567. Rated loads do not exceed 87% of hydraulic lift capacity or 75% of tipping load.

Notes:

- The details in this specification brochure are based on Dash 10 models as indicated. Some attachments may be installed on prior models but specifications may vary. Contact Young Corporation for details.
- Variations to the specifications in this brochure can be designed and produced in accordance with customer requirements by contacting Young Corporation with details.
- SUPER LONG FRONT ATTACHMENTS are designed for "LIGHT DUTY" work only. Excavating work or heavy hoisting may result in side loads and other activities that will damage the machine.
- Disassembly may be required due to transport restrictions.
- Illustrations may include optional equipment.
- Operating weights include additional counterweight when required.

KOMATSU®